An aerial, high-angle photograph of the New York City skyline, showing a dense cluster of skyscrapers and buildings. The Hudson River is visible on the left, and the East River is on the right. The sky is a clear, light blue. The image is overlaid with a teal gradient that fades from the top to the bottom.

# **NYCEM Hazard History & Consequence Tool User Guide**

Published by **WSP USA**

# Contents

Overview .....	1
Event Selection.....	2
Event Summary.....	6
Hazard Event Details .....	8
Consequence Detail Page(s).....	13
Miscellaneous: Weather Alerts/Messaging .....	33
Event Exports.....	34

## Overview

NYC Hazard History and Consequence Tool

About Resources

### NYC Hazard History and Consequence Tool

Welcome to the Hazard History and Consequence Tool. This tool provides detailed data on New York City's natural, climate driven hazards and their impacts. It supports and coordinates with the city's Hazard Mitigation Plan (HMP). For information and data on non-natural hazard impacts on New York City, please refer back to the HMP's [Non-Natural hazard profile](#)

What this tool offers

- A central archive to support risk and vulnerability assessments.
- Historic hourly weather station data.
- Localized risk information for emergency planning, response, and community outreach.
- Records of past losses to support analysis of costs and benefits.

The Hazard History & Consequence Tool (HHC) was developed by the NYC Emergency Management (NYCEM) as an enhancement of the 2014 Hazard Mitigation Plan. The tool provides detailed data on New York City's natural, climate driven hazards and their impacts, offering a user-friendly, accessible, and comprehensive platform for exploring hazard events and associated consequences. For more on non-natural hazards and full hazard profiles, please refer to the [NYC Hazard Mitigation Plan](#).

### What the HHC offers:

- A central archive to support risk and vulnerability assessments.
- Historic hourly weather station data.
- Localized risk information for emergency planning, response, and community outreach.
- Records of past losses to support analysis of costs and benefits.

This User Guide is designed to support users in searching, reviewing, and analyzing the storm events and historical consequence datasets available within the HHC. It provides a step-by-step overview of the tool's functionality and highlights key features that support data exploration and analysis.

Every path through the user-level interface starts with searching for a desired storm event using various filtering strategies. Once the storm event has been identified, the user can then dive into event-level and consequence-level analysis pages. Users can also browse the weather, media, and text product datasets associated with a storm event. A key concept emphasized in the HHC is the distinction between hazards, events, and consequences. The HHC integrates all three layers, enabling users to understand not only the hazards themselves, but also the broader context and impacts of each event.

For support on using the tool, please contact **Gabriella Medina** at [GMedina@oem.nyc.gov](mailto:GMedina@oem.nyc.gov) or at **(347) 971-2150**.

## Event Selection

By default, users can view all storm events in the tool by leaving the search fields blank on the HHC homepage and selecting the blue **“Explore”** button. For quick access, a selection of **Notable Events** is also displayed on the homepage.

The HHC 2.0 redesign prioritizes a more intuitive and streamlined user experience, emphasizing quality over quantity. The search functionality is designed to operate similarly to a flight booking interface – users select a hazard type and date range, and the tool returns relevant results. This approach allows users to quickly identify events of interest, explore specific storm events, and navigate to event-level dashboards for deeper analysis.

### Find Event

Hazard	Start Date	End Date
None selected	9/23/1785	3/30/2026

Explore

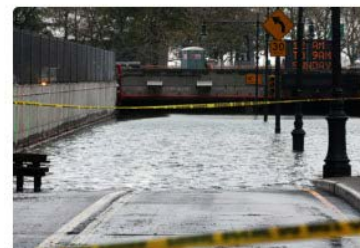
### Notable Events



**Post-Tropical Cyclone Ida**  
09/01/2021 - 09/02/2021



**September 29, 2022 Event**  
09/29/2022 - 10/03/2022



**Hurricane Sandy**  
10/29/2012 - 10/30/2012

### Search by Criteria

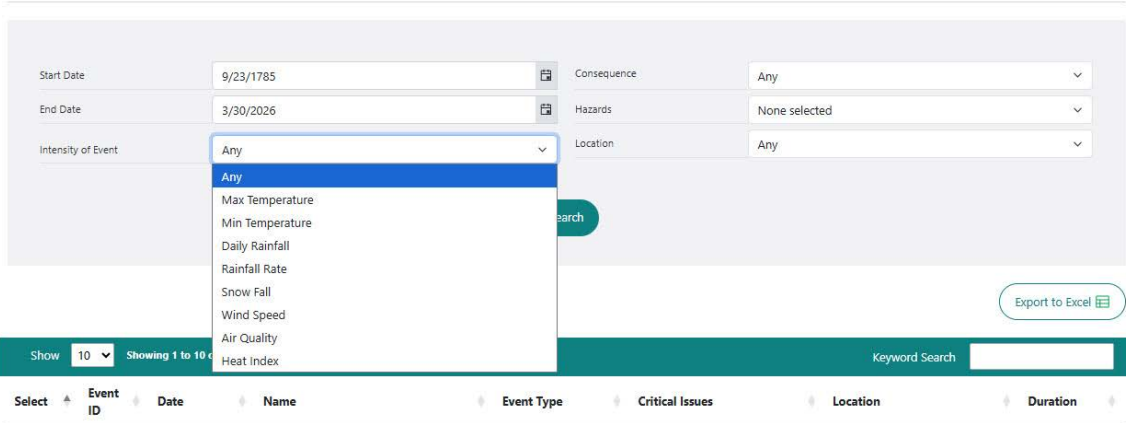
The start date field will default to 9/23/1785, the earliest date for which storm event data have been included in the tool. The end date will default to today's date.

Each criteria fields' selection will be combined using an **"AND"** statement to determine the matched storm events. For example, *"where the storm event start date is within the specified date range AND the storm event covers the Bronx AND..."*. If a criteria field allows for multiple options to be selected, these selected options will be combined using an **"OR"** statement, as a sub-expression of the criteria field's AND clause. For example, *"where the storm event start date is within the specified date range AND the storm event covers the Bronx AND Critical Issues are Coastal Flooding OR Coastal Storm..."*

### Find Hazard Event by Intensity

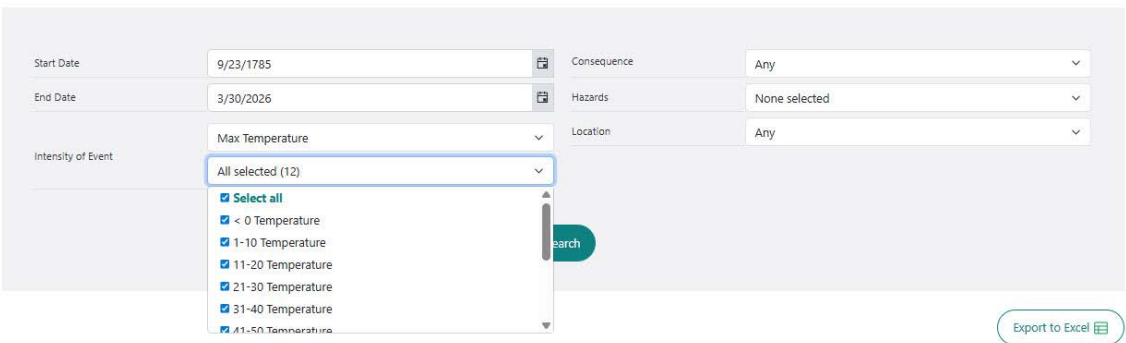
The **"Intensity of Event"** filter allows users to define parameters for weather-related impacts associated with a storm event. After selecting a primary intensity category, a secondary menu will appear with more detailed filtering options.

#### Find Hazard Event



For example, when **"Snowfall"** is selected as the primary filter, the secondary menu displays a range of snowfall amounts that can be used to further refine results.

#### Find Hazard Event



## Find Hazard Event by Consequence

All consequences included in the HHC are available in the **“Consequence”** filter menu. Users can leave this filter unselected to display all events and their associated consequences, or select specific consequence types to refine results and focus on events that include the selected consequence data.

### Find Hazard Event

The screenshot shows a search interface with the following fields and options:

- Start Date:** 9/23/1785
- End Date:** 3/30/2026
- Intensity of Event:** Max Temperature (dropdown), All selected (12) (dropdown)
- Consequence:** Any (dropdown menu is open, showing a list of consequences including Beach Advisories/Closures, FEMA Flood Assistance, FEMA Individual Assistance, FEMA Public Assistance, Inland Flooding Complaints, MTA Ridership, No Heat/No Hot Water, Power Outages, Sanitation Metrics, School Attendance, Tree Emergency, Vehicle Collision, and Weather Alerts/Messages)
- Hazards:** (empty dropdown)
- Location:** (empty dropdown)
- Search:** (button)
- Footer:** Show 10 Showing 1 to 10 of 2,513 entries

## Find Hazard Event by Hazards

As noted previously, the HHC focuses on natural hazard events, with hazard types aligned to those defined in the [NYC Hazard Mitigation Plan](#). The **“Hazards”** filter allows users to narrow their search by selecting specific natural hazards of interest, enabling more targeted exploration of events and associated impacts.

### Find Hazard Event

The screenshot shows the same search interface as above, but with the 'Hazards' dropdown menu open:

- Start Date:** 9/23/1785
- End Date:** 3/30/2026
- Intensity of Event:** Max Temperature (dropdown), All selected (12) (dropdown)
- Consequence:** Any (dropdown)
- Hazards:** None selected (dropdown menu is open, showing a search bar and a list of hazards including Select all, Air Quality, Coastal Flooding, Drought, and Earthquake)
- Location:** (empty dropdown)
- Search:** (button)
- Footer:** Show 10 Showing 1 to 10 of 2,513 entries

The **“Location”** filter allows users to refine results by geographic area, enabling analysis of event impacts within a specific borough.

## Find Hazard Event

## Event Selection Results

Once the **“Search”** button is selected on the Event Selection page, matching results are displayed in a table. The table includes key details for each storm event, such as event name, start date, event type, critical issues, location, duration, and event ID. Users can further sort and refine results using the search box located in the upper-right corner of the table.

To explore an event in more detail, users can select a storm event by clicking the **“Select”** button within a row, which will navigate to the Event Summary page. Users may return to the Event Selection page at any time by selecting the **“Search”** button located in the top-left corner.

A key feature of the HHC is the ability to preserve search queries. Users can apply filters to identify events of interest, navigate into an event, and then return to the Event Selection page with their original search criteria retained by clicking on “search” in the top left hand corner. This allows users to efficiently move between events without needing to reapply filters.

**Flash Flooding (SW3015)**

Summary

Details

**Consequences**

- > No Heat/No Hot Water
- > Inland Flood Complaints
- > MTA Ridership
- > Vehicle Collisions
- > School Attendance
- > Power Outages
- > Sanitation Metrics
- > Tree Emergency
- > Beach Advisories/Closures

### Event Summary

**NARRATIVE**

On 10/30/2025 at 12:00 AM a Flash Flood Emergency event began to impact New York City. During this event, heavy rain with peak precipitation rates of 5.9 inches per hour overwhelmed streets, subway stations, and low-lying areas across Manhattan, Bronx, Brooklyn, Queens, and Staten Island. The event lasted through 10/30/2025 at 11:59 PM, resulting in hazardous driving conditions, submerged vehicles, flooded basements, and two fatalities.

**DESCRIPTION**

Hazard Event Type	Thunderstorms
Critical Issues	Flash Flooding

**On This Page**

- Narrative
- Description
- Media Links
- Activations
- Safety
- Consequences
- Cumulative Values
- Radar Map
- Storm Track Map
- Event Data

Export to Excel

Show 10 Showing 1 to 2 of 2 entries Keyword Search

Select	Event ID	Date	Name	Event Type	Critical Issues	Location	Duration
	SW2982	7/31/2025 12:00 AM	Flash Flood	Thunderstorms	Flash Flooding	Manhattan, Bronx, Brooklyn, Queens, Staten Island	1 day, 23 hours
	SW3015	10/30/2025 12:00 AM	Flash Flooding	Thunderstorms	Flash Flooding	Manhattan, Bronx, Brooklyn, Queens, Staten Island	1 day, 23 hours

1

# Event Summary

The Event Summary page provides a written narrative overview of a hazard event, highlighting when, where, and what occurred. This includes the event type, critical issues, start and end times, and a description of the hazard’s impacts.

Verified public media links, when available, are included to provide additional context. The Media Links section offers access to documents and news articles related to an event, with all entries presented as clickable hyperlinks. Fatality and injury data in the HHC are sourced from verified public media outlets. Due to data agreements and privacy regulations, NYCEM does not report official figures from government agencies in order to protect patient privacy and comply with data-sharing requirements.

Activation data is also displayed, such as the number of NYCEM plans activated and whether NYCEM’s Emergency Operations Center (EOC) was mobilized. When available, radar and storm track maps are included to visually contextualize the event. This comprehensive layout allows users to understand both the narrative and data-driven aspects of an event, supporting planning, analysis, and communication of hazard impacts.

< Search

**Flash Flooding (SW3015)**

[Summary](#)

Details

**Consequences**

- > No Heat/No Hot Water
- > Inland Flood Complaints
- > MTA Ridership
- > Vehicle Collisions
- > School Attendance
- > Power Outages
- > Sanitation Metrics
- > Tree Emergency
- > Beach Advisories/Closures

**Federal Assistance**

- > FEMA Flood Assistance (NFIP)
- > FEMA Individual Assistance
- > FEMA Public Assistance

**Miscellaneous**

- > Weather Alerts/Messages

## Event Summary

---

**NARRATIVE**

On 10/30/2025 at 12:00 AM a Flash Flood Emergency event began to impact New York City. During this event, heavy rain with peak precipitation rates of 5.9 inches per hour overwhelmed streets, subway stations, and low-lying areas across Manhattan, Bronx, Brooklyn, Queens, and Staten Island. The event lasted through 10/30/2025 at 11:59 PM, resulting in hazardous driving conditions, submerged vehicles, flooded basements, and two fatalities.

**DESCRIPTION**

Hazard Event Type	Thunderstorms
Critical Issues	Flash Flooding
Start Time	10/30/2025 12:00 AM
End Time	10/31/2025 11:59 PM

**MEDIA LINKS**

ABC News	<a href="#">2 dead after heavy rain brings intense flooding to New York City - ABC News</a>
AP	<a href="#">2 people died in flooded New York City basements as record rain fell   AP News</a>
Spectrum News	<a href="#">Heavy rain sets records, kills two in flooded NYC basements</a>

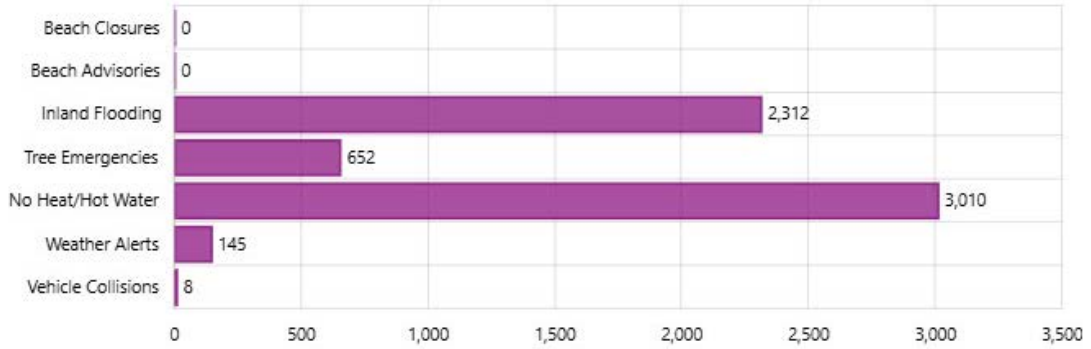
**ACTIVATIONS**

NYCEM Plans Activated	1
Emergency Operation Center	No

**On This Page**

- Narrative
- Description
- Media Links
- Activations
- Safety
- Consequences
- Cumulative Values
- Radar Map
- Storm Track Map
- Event Data

### CONSEQUENCES



### CUMULATIVE VALUES



### RADAR MAP



# Hazard Event Details

Users can navigate to the **Event Details** page from the Event Summary page to access a detailed view of a specific storm event. This page consolidates citywide weather, flood, tide, and air quality data in one place. A map displays the peak values reported by each weather station for a selected metric, and users can explore the full event details, timeline, precipitation and wind charts, tide gauge readings, flood sensor data, and air quality information.

< Search

**Flash Flooding (SW3015)**

Summary

[Details](#)

**Consequences**

- > No Heat/No Hot Water
- > Inland Flood Complaints
- > MTA Ridership
- > Vehicle Collisions
- > School Attendance
- > Power Outages
- > Sanitation Metrics
- > Tree Emergency
- > Beach Advisories/Closures

**Federal Assistance**

- > FEMA Flood Assistance (NFIP)
- > FEMA Individual Assistance
- > FEMA Public Assistance

**Miscellaneous**

- > Weather Alerts/Messages

## Event Details

**On This Page**

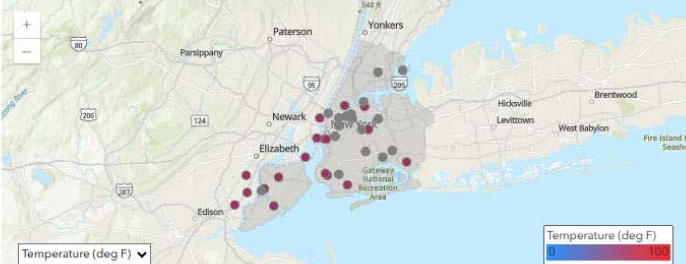
- Weather Station
  - > Weather Metrics
  - > Weather Station Map
  - > Weather Charts
- Tide Gauge
  - > Tide Gauge Readings
  - > Tide Gauge Map
  - > Event Data
- Flood Sensor
  - > Flood Sensor Readings
  - > Flood Sensor Map
  - > Event Data
- Air Quality
  - > Air Quality Chart
  - > Air Quality Map
  - > Event Data

**WEATHER STATION**

**WEATHER METRICS**

Max Temperature	63° F
Min Temperature	49° F
Max Wind Speed	30 mph
Max Wind Gust	53 mph
Max Snow Fall	n/a
Max Daily Rainfall	2.58 in
Max Rainfall Rate	1.57 in/hr

**WEATHER STATION MAP**



Esri, CGIAR, USGS | New Jersey Office of GIS, Esri, TomTom, Garmin, SafeGraph, FAO, MET/NASA, USGS, EPA, NPS, USFWS  
Powered by Esri

**Please note:** Not all data is available for every event. Events have unique characteristics, and some may not include all weather-related metrics listed on the Event Details page.

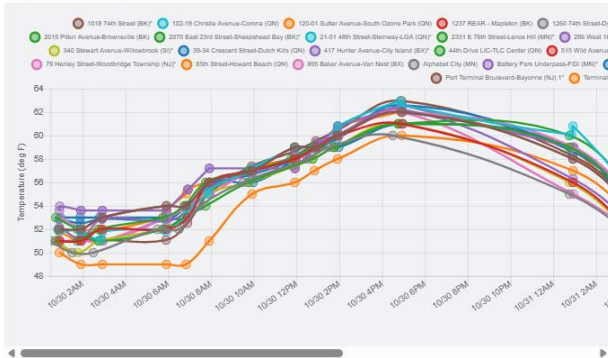
## On the Event Details page:

### ■ Weather Station Data

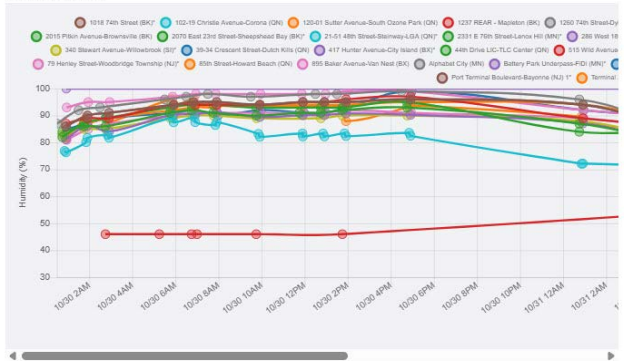
- **Weather Metrics:** Time series line charts for precipitation, wind, temperature, and other weather metrics. Users can change the displayed metric using the dropdown menu in the top-right corner of the chart.
- **Weather Station Map:** Displays peak values for the selected metric. Users can filter the metrics displayed on the map using the dropdown menu in the bottom-left corner.

### WEATHER CHARTS

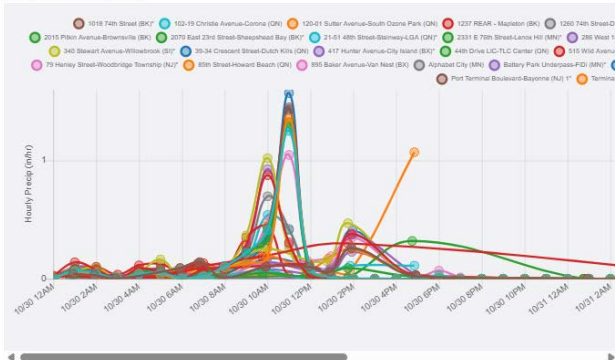
Temperature Chart (deg F)



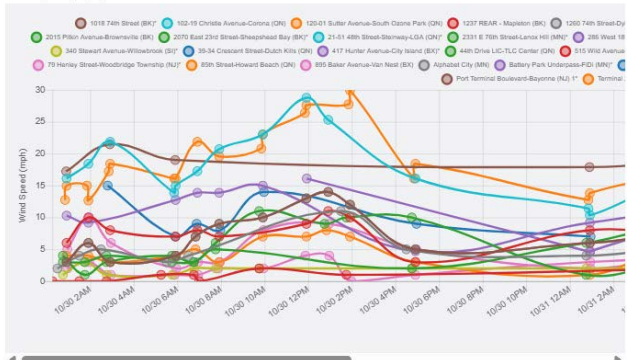
Humidity Chart (%)



Hourly Precipitation (in/hr)



Wind Speed (mph)



### Tide Gauges

- **Tide Gauge Readings:** Detailed measurements from reporting stations.
- **Tide Gauge Map:** Visualizes tide data across locations.

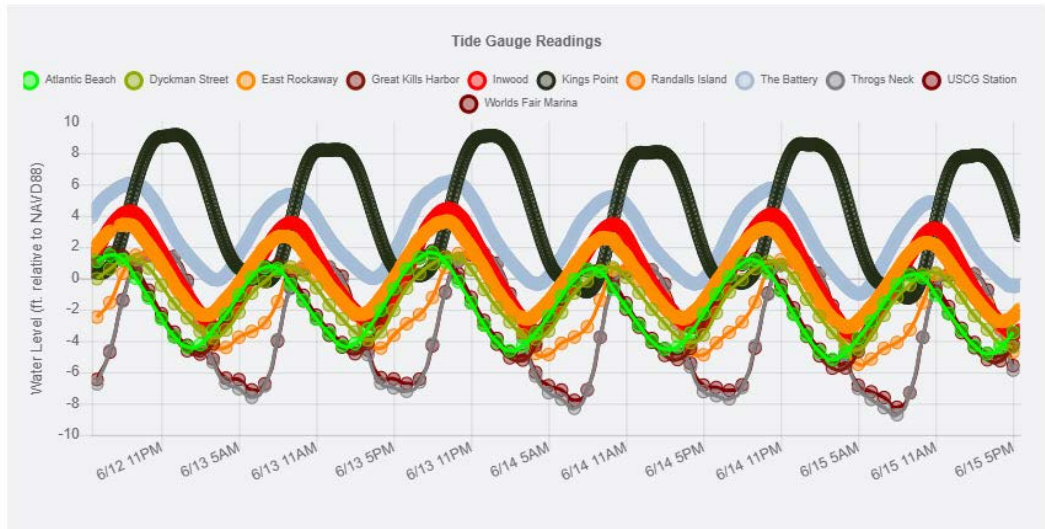
#### TIDE GAUGE

Stations

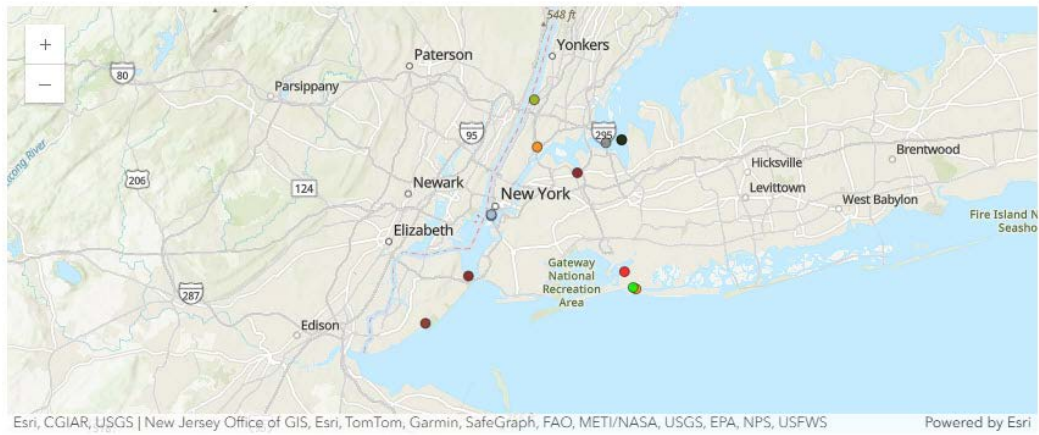
None selected

apply

### TIDE GAUGE READINGS



### TIDE GAUGE MAP



Flood Sensors

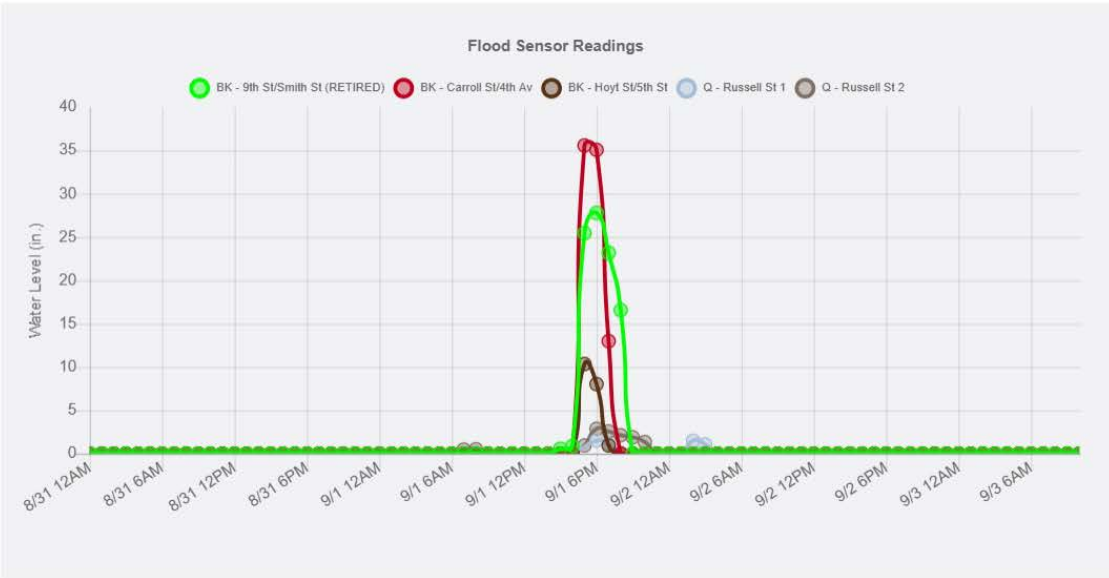
- Flood Sensor Readings: Reports from flood monitoring sensors.
- Flood Sensor Map: Shows spatial distribution of recorded flood levels.

FLOOD SENSOR

Stations 5 selected

apply

FLOOD SENSOR READINGS



FLOOD SENSOR MAP



■ Air Quality

- Air Quality Chart: Time series line chart for air quality metrics, where available.
- Air Quality Map: Shows spatial distribution of recorded Air Quality Index levels

**AIR QUALITY**

Sites: 14 selected

Parameter:  PM2.5  Ozone

Metric:  AQI  Concentration (Hourly)

apply

**AIR QUALITY CHART**



**AIR QUALITY MAP**



# Consequence Detail Page(s)

The majority of the consequence details pages have the same look and feel. In general, a consequence details page will offer the user a form to refine the filter criteria for the storm event data displayed. Once the user has formed the desired filter, they can click the “Apply” button to produce the consequence map and chart. The user is also offered a date range slider to further refine the window of data displayed (using this control reuses any filter selections made above; only the displayed date range changes). If no consequence data is available for the dataset a user is viewing then a message will be displayed at the top of the page alerting the user of that.

## Consequence Details Page: No Heat/No Hot Water

The No Heat/Hot Water page has data can be filtered from citywide to neighborhood levels to understand this consequence in a more localized context. Data is also displayed on a map for a geographic display. Users can hover over the map to get number for service requests as shown below.

### No Heat/No Hot Water

---

Start Date: 10/30/2025 12:00 AM

End Date: 10/31/2025 11:59 PM

Location: CityWide

Aggregate By:  Complaint Type  Location

[Apply](#)

**On This Page**

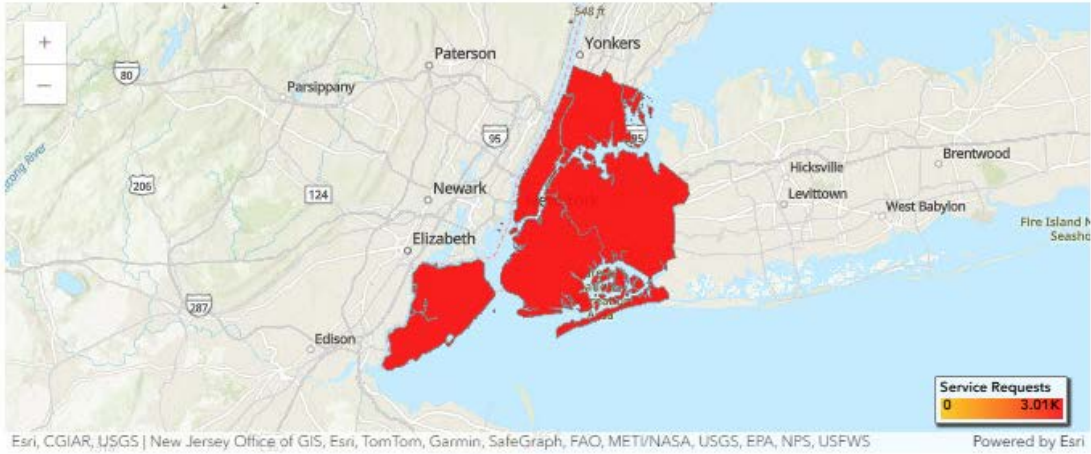
No Heat/No Hot Water

- > No Heat/No Hot Water Chart
- > No Heat/No Hot Water Map
- > Event Data

### NO HEAT/NO HOT WATER CHART



### NO HEAT/NO HOT WATER MAP



## Consequence Details Page: Inland Flooding

The Inland Flooding page displays any event-related service requests as routed from the NYC 311 system through the NYC Department of Environmental Protection. These complaints originate from NYC residents who witness the consequence first-hand. For Inland Flooding a user can filter by Start and End Date, Complaint Types, and Location. The results set can be aggregated by Complaint Type, or Location. The map will display the total count of complaints aggregated by locations selected in the Location dropdown menu.

### Inland Flood Complaints

Start Date	<input type="text" value="10/30/2025 12:00 AM"/>
End Date	<input type="text" value="10/31/2025 11:59 PM"/>
Complaint Types	<input type="text" value="All selected (2)"/>
Location	<input type="text" value="CityWide"/>
Aggregate By	<input type="radio"/> Complaint Type <input checked="" type="radio"/> Location

Apply

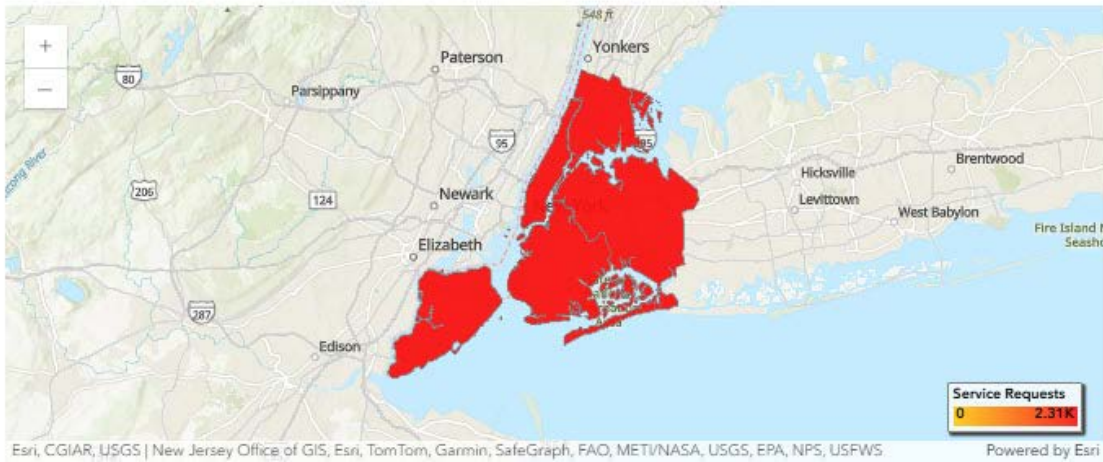
#### On This Page

- Inland Flood Complaints
  - > Service Request Chart
  - > Service Request Map
  - > Event Data

### SERVICE REQUEST CHART



### SERVICE REQUEST MAP



### Consequence Details Page: MTA Ridership

The Subway Ridership page displays all subway ridership (not including MTA workers or transfer swipes) at the subway concourse level. For Subway Ridership a user can filter by Start and End Date and Borough or Station. The map will display ridership aggregated by locations selected in the Location drop-down menu.

## MTA Ridership

Start Date: 10/30/2025 12:00 AM

End Date: 10/31/2025 11:59 PM

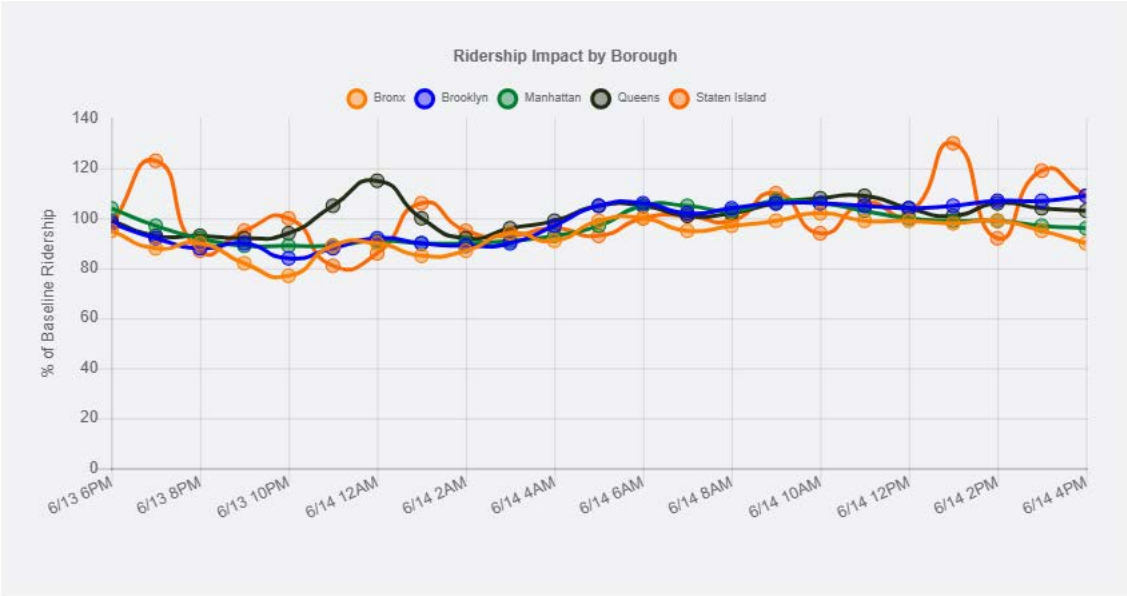
Filter By:  Borough  Station

All selected (5)

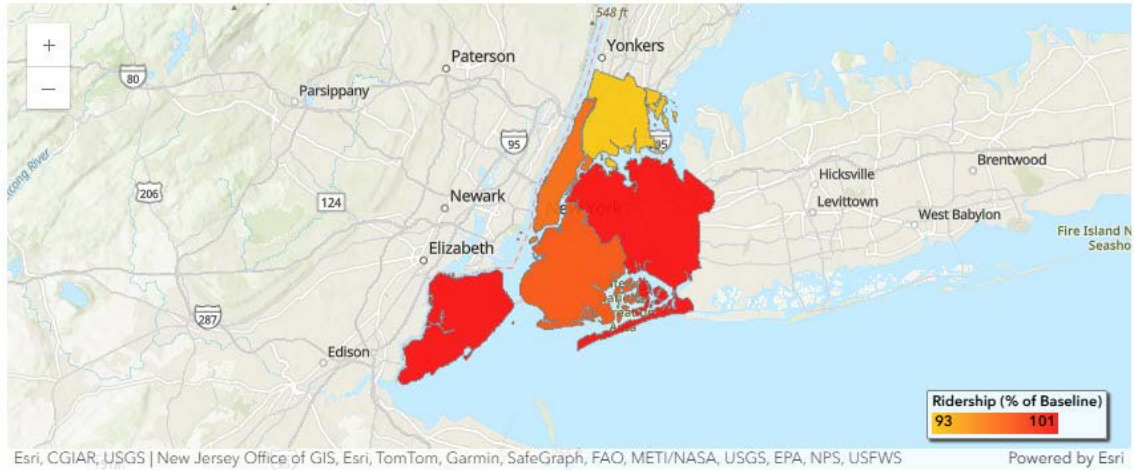
Apply

- On This Page
- MTA Ridership
    - > MTA Ridership Chart
    - > MTA Ridership Map
    - > Event Data

### MTA RIDERSHIP CHART



### MTA RIDERSHIP MAP



## Consequence Details Page: Vehicle Collisions

The Vehicle Collision page displays motor-vehicle collision data when available for an event. For Vehicle Collisions, a user can filter by Start and End Date and Citywide or Borough. The Vehicle Collisions Chart contains a time series of collisions for the duration of the event. The Personal Injuries/Fatalities Chart will give a breakdown of persons injured and persons deceased due to vehicle collisions during the event. Here, the chart shows a total of 7 people were injured for the event selected. The Vehicle Collisions Map gives a spatial visual of where the vehicle collisions were reported to happen.

### Vehicle Collisions

Start Date: 07/13/2023 09:00 AM

End Date: 07/17/2023 08:00 AM

Location:  Citywide  Borough

Apply

#### On This Page

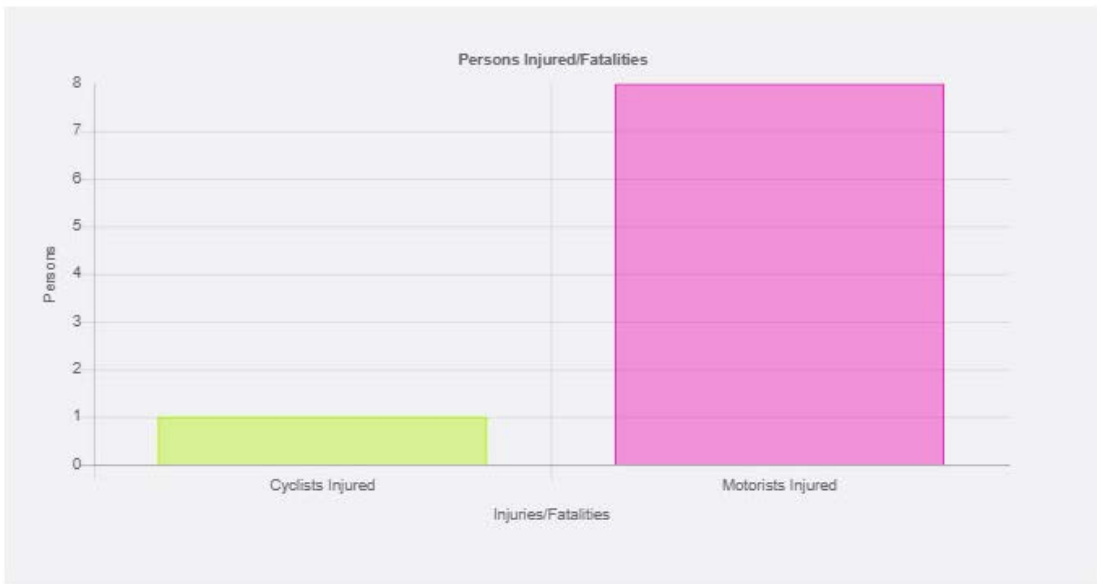
##### Vehicle Collisions

- > Vehicle Collisions Chart
- > Persons Injured/Fatalities
- > Vehicle Collisions Map
- > Event Data

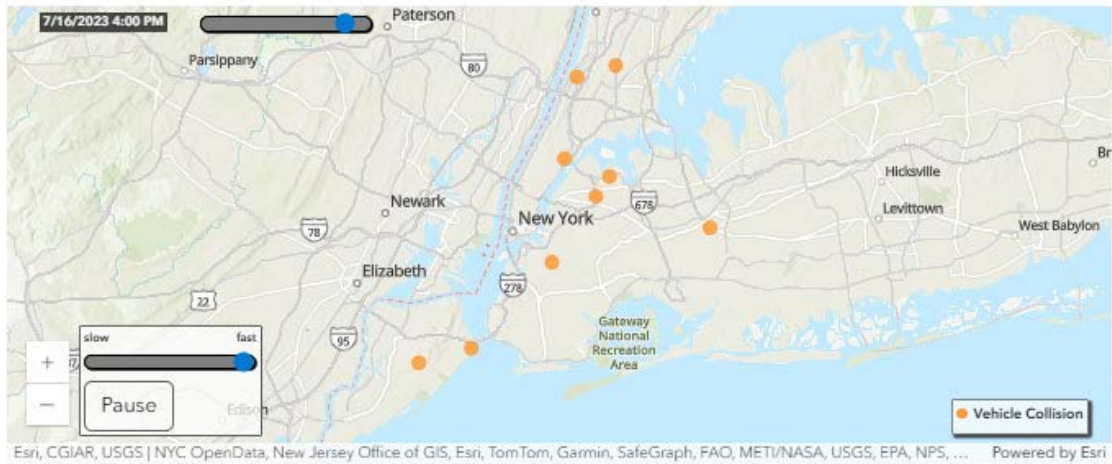
### VEHICLE COLLISIONS CHART



### PERSONS INJURED/FATALITIES



### VEHICLE COLLISIONS MAP



### Consequence Details Page: School Attendance

NYC Public Schools (previously DOE) requires all schools to track the number of students who are present/absent/released for every school day of the school year. These numbers were provided for the tool by NYC Public Schools, by school organization. In order to attribute a location to each school location, it was assumed that the primary location for that organization could represent the location for all of the students in question.

For School Attendance a user can filter by Start and End Date, and Location. The map will display percent of students absent aggregated by locations selected in the Location drop-down menu.

### School Attendance

Start Date	<input type="text" value="10/29/2012 05:54 AM"/>
End Date	<input type="text" value="10/30/2012 05:54 AM"/>
Location	<input type="text" value="CityWide"/>

Apply

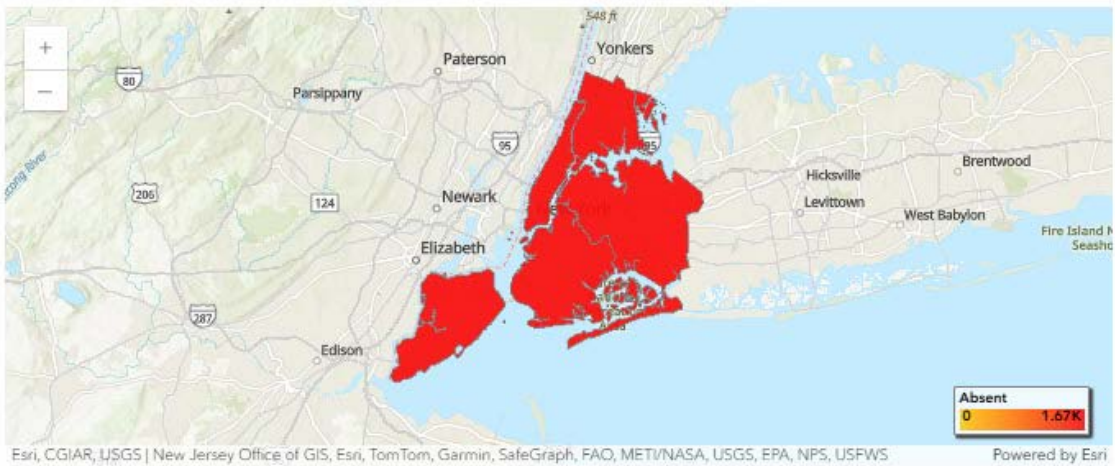
#### On This Page

- School Attendance
  - > School Attendance Chart
  - > School Attendance Map
  - > Event Data

### SCHOOL ATTENDANCE CHART



### SCHOOL ATTENDANCE MAP



### Consequence Details Page: Power Outages

The Power Outages page displays the number of customers affected by power outages, at a network level, as reported by the power companies to NYS DPS (Department of Public Service). For Power Outages a user can filter by Start and End Date, and Location. The map will display count of customers affected by the outage aggregated by the selected Borough. Another consequence page of power outage data is available for the enhanced version of the HHC due to sensitive data sharing agreements.

#### Power Outages

Start Date

End Date

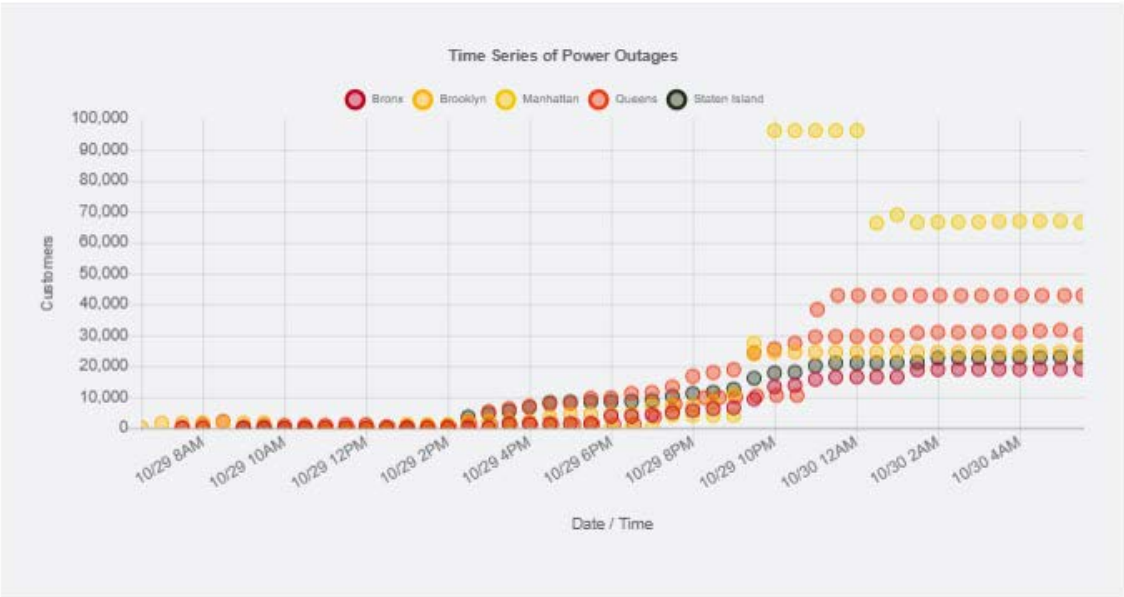
Location

Apply

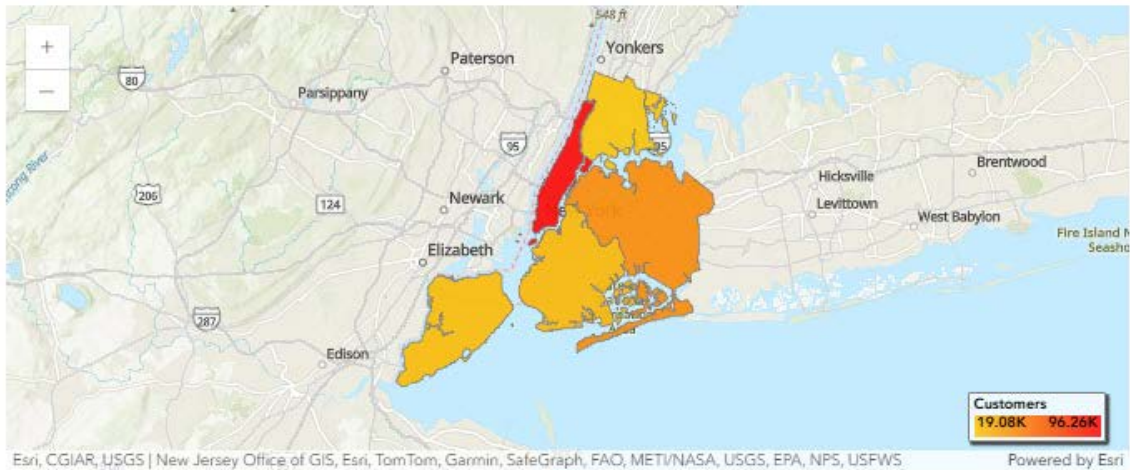
On This Page

- Power Outages
  - > Power Outages Chart
  - > Power Outages Map
  - > Event Data

#### POWER OUTAGE CHART



## POWER OUTAGE MAP



## Consequence Details Page: Sanitation Metrics

The Sanitation Metrics pages displays a variety of metrics regarding DSNY Operations during severe weather events. The first section is a Summary. The Summary shows the change in residential collection compared with the prior year. The Summary also points out the various supporting resources and their required amounts. For example, 483 salt spreaders were deployed during the duration of the storm event and 123,052 tons of salt was used.

As users scroll past the Summary section, a chart of Snow Melters Deployed for Event will show snow melter data if available. A Melter Days by Zone map showing total number of Melter-Days for each DSNY Zone will follow the chart.

The Sanitation Metrics timeline shows the duration of activity of the salt spreaders and snow plows, with respect to the duration of the storm event. You can see when the storm event, salting and plowing started and stopped and how they overlap one another. When available, Residential Collection data is also reported in the tool.

## Sanitation Metrics

Start Date	02/25/2010 07:00 AM
End Date	02/25/2010 01:00 PM

### SUMMARY

Change in <b>Refuse</b> collections as compared to prior year	n/a
Change in <b>Paper</b> collections as compared to prior year	n/a
Change in <b>Metal/Glass/Plastic</b> collections as compared to prior year	n/a
Spreaders Deployed Start Date	2/25/2010 10:01 AM
Spreaders Deployed End Date	2/27/2010 7:01 AM
# of Spreaders Deployed	467
Plows Deployed Start Date	2/25/2010 12:00 PM
Plows Deployed End Date	2/27/2010 7:01 AM
# of Plows Deployed	1,737
Total <b>Salt</b> used during event	59,393 tons
Total <b>Calcium Chloride</b> used during event	77,767 gals
The total number of <b>other city agency employees</b> contracted during this event	84
The total number of <b>private employees</b> contracted during this event	39

Collection **was not** suspended for at least one day during this event.

### On This Page

- Sanitation Metrics
- > Summary
- > Melters Table
- > Melters Zone Map
- > Melters Timeline
- > Residential Collections
- > Event Data

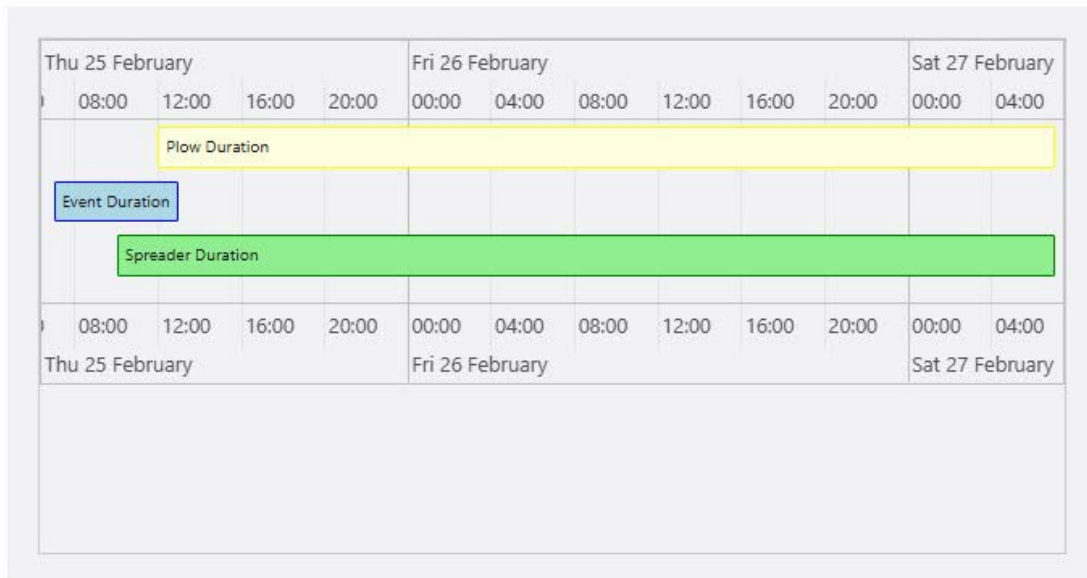
## SNOW MELTERS DEPLOYED FOR EVENT

DSNY Zone	# of Melters	Duration
BKN	1	2 days
BKS	1	3 days
BX	3	4 days
MN	4	4 days
QE	1	4 days
QW	1	4 days
SI	1	5 days

### MELTER DAYS BY ZONE



### MELTERS DEPLOYMENT TIMELINE



### Consequence Details Page: Tree Emergency

The Tree Emergencies page shows how many tree service requests and work orders were reported via 311 for the event duration. Tree Emergencies can be aggregated by Complaint Type or Location. The Time Series Chart shows a cumulative time series of service requests and work orders. The Time Lapse Map gives a full breakdown of when and where these 311 requests were made. The type of work order or service request is displayed in the bar chart: Hanging Limb, Limb Down, and Tree Down. The Service Request Map gives an aggregated look at service requests based on the geographic scale filtered on the main menu.

### Tree Emergencies

Start Date: 02/25/2010 07:00 AM

End Date: 02/25/2010 01:00 PM

Complaint Types: All selected (3)

Request Types: All selected (2)

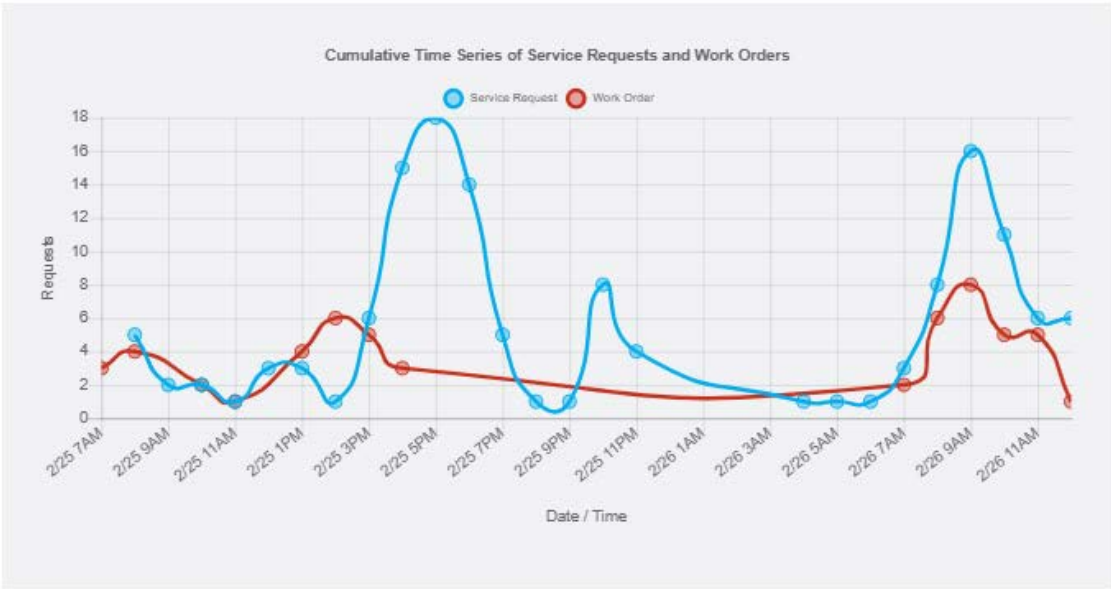
Location: CityWide

Aggregate By:  Complaint Type  Location

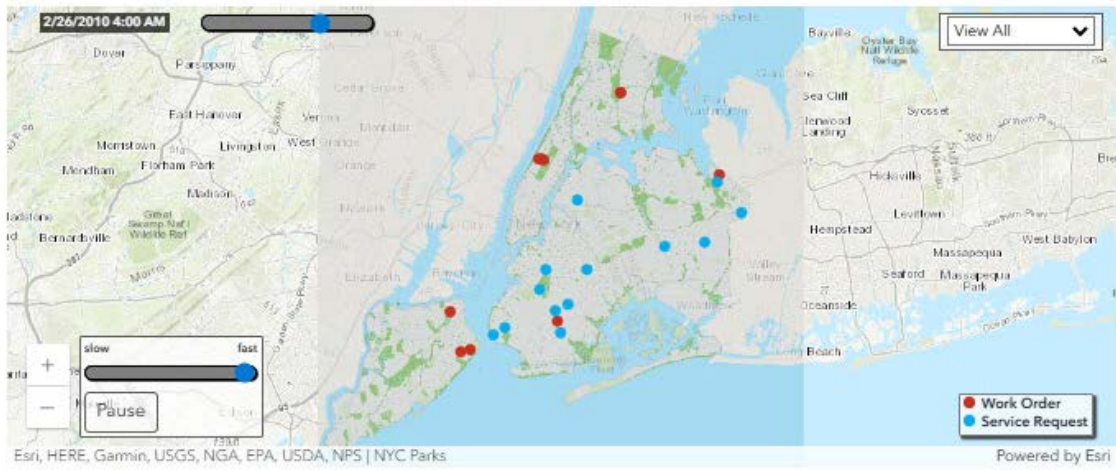
- On This Page
- Tree Emergency
    - > Time Series Chart
    - > Time Lapse map
    - > Service Request Chart
    - > Service Request Map
    - > Event Data

Apply

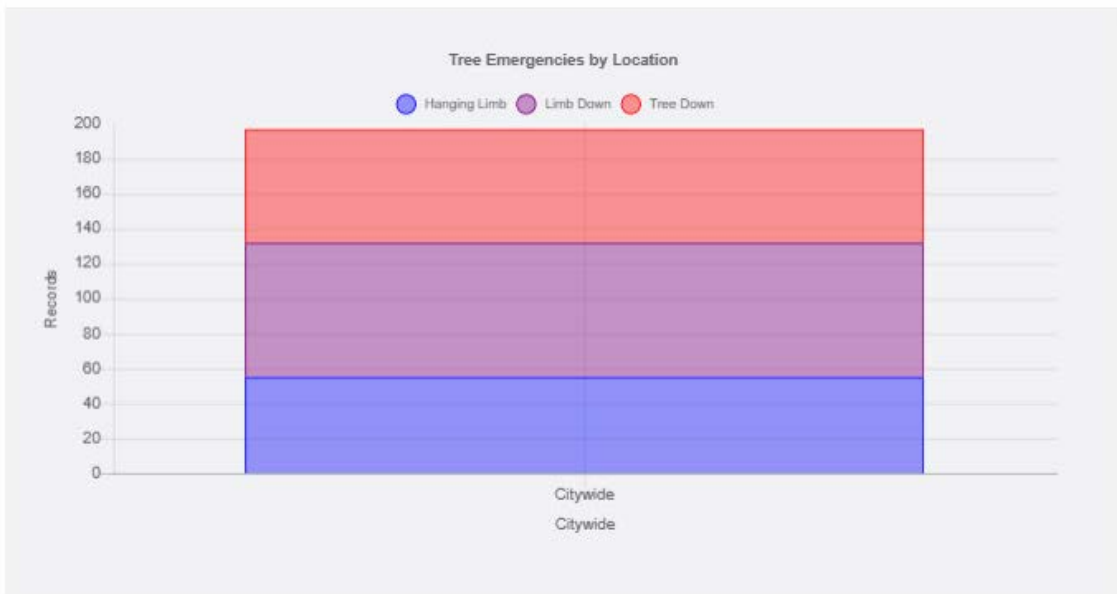
### TIME SERIES CHART



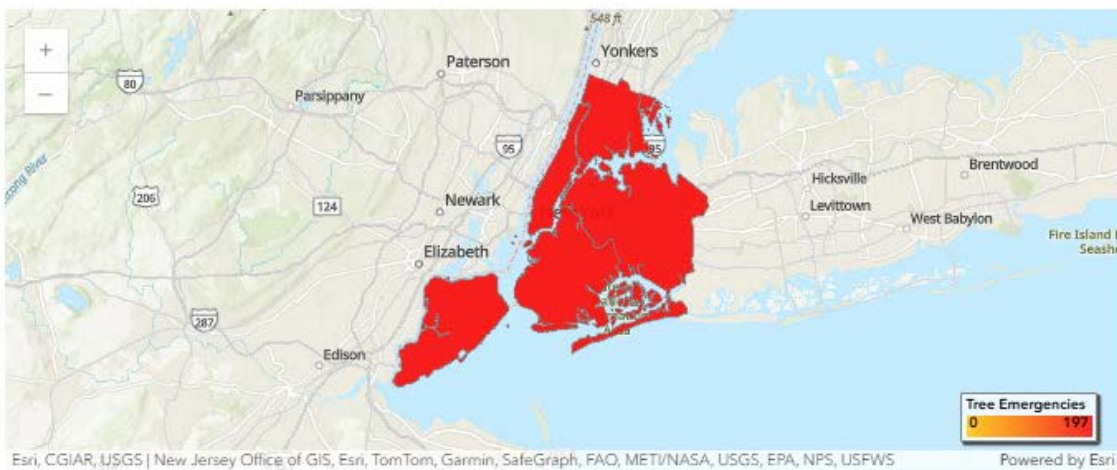
### TIME LAPSE MAP



### SERVICE REQUEST CHART



### SERVICE REQUEST MAP



## Consequence Details Page: Beach Advisories/Closures

The Beach Advisories page displays advisories and closures issued by DOHMH as a result of rainfall, and/or sampling of water at public and private beaches throughout NYC. For Beach Advisories a user can filter Start and End date, Notification Types, and Location. The results set can be aggregated by either Notification Type or Location. The map will display the total count of beach advisories aggregated by locations selected the Location drop-down menu.

### Beach Advisories/Closures

Start Date	09/08/2023 12:00 PM
End Date	09/14/2023 07:30 AM
Notification Types	All selected (3) <span>▼</span>
Location	CityWide <span>▼</span>
Aggregate By	<input type="radio"/> Notification Type <input checked="" type="radio"/> Location

Apply

#### On This Page

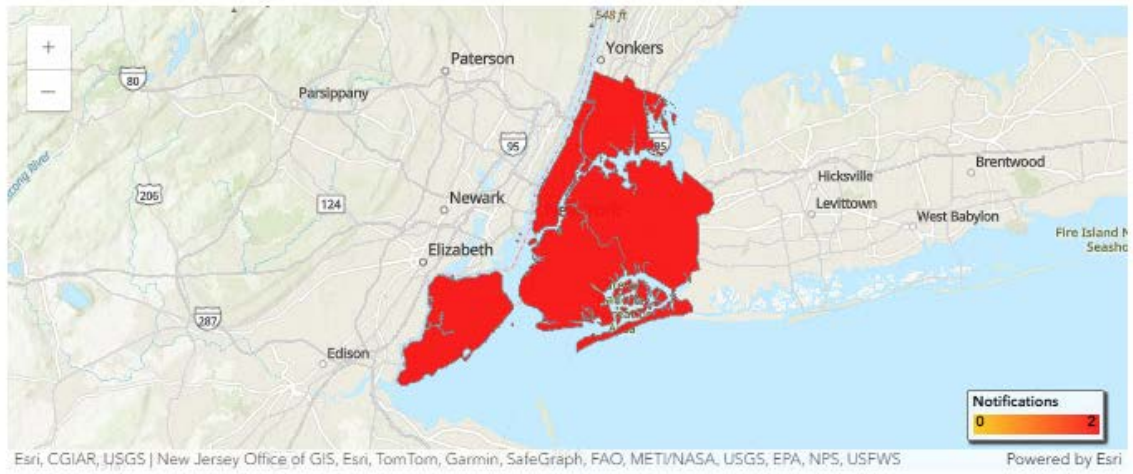
##### Beach Advisories/Closures

- > Beach Advisories/Closures Chart
- > Beach Advisories/Closures Map
- > Event Data

### BEACH ADVISORIES/CLOSURES CHART



### BEACH ADVISORIES/CLOSURES MAP



## FEMA Individual Assistance

Residence Type	All selected (13)	▼
Ownership Type	All selected (3)	▼
Location	Neighborhood	▼
	All selected (262)	▼

apply

### On This Page

#### FEMA Individual Assistance

- > Individual Assistance Chart
- > Individual Assistance Chart Map
- > Event Data

## Consequence Details Page: FEMA Public Assistance

The FEMA Public Assistance page displays Federal Share Obligated amounts for FEMA Public Assistance applications as a result of a Presidential declaration of an emergency or major disaster. For FEMA Public Assistance a user can filter by Applicant Type, Damage Category, and Location. The results set can be aggregated by either Applicant Type or Damage Category. The map will display total amount of public assistance aggregated by locations selected in the Location drop-down menu. Total FEMA Public Assistance awards in multiple community districts are not represented in the map to maintain geographic accuracy in how the data is displayed. For this reason, a callout box will tell of the total amount of FEMA Public Assistance as part of the Public Assistance Map

## FEMA Public Assistance

Applicant Type	All selected (8)	▼
Damage Category	All selected (8)	▼
Location	Neighborhood	▼
	All selected (262)	▼
Aggregate By	<input type="radio"/> Applicant Type <input checked="" type="radio"/> Damage Category	

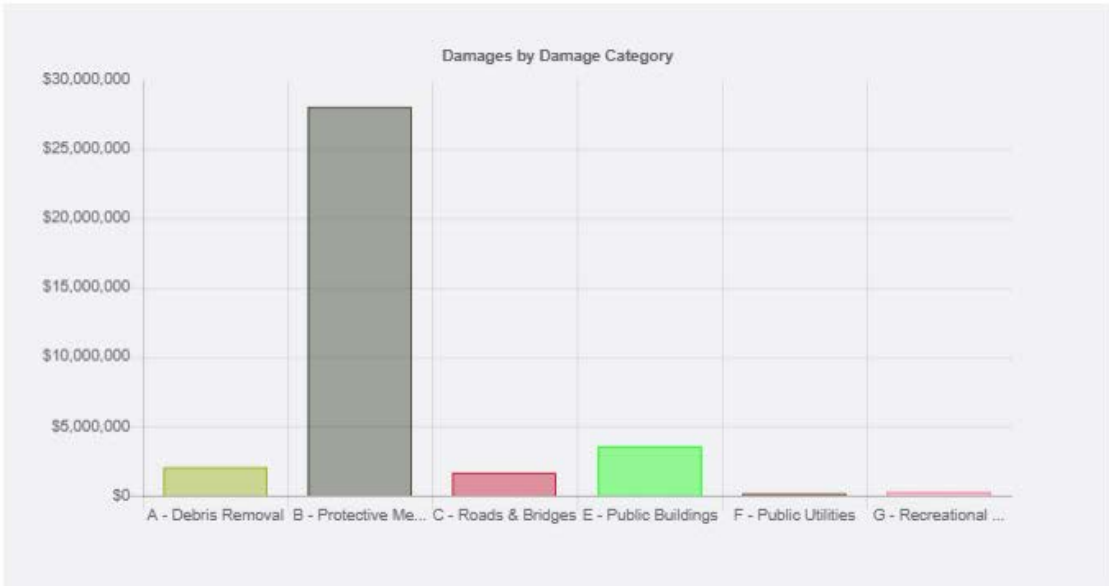
apply

### On This Page

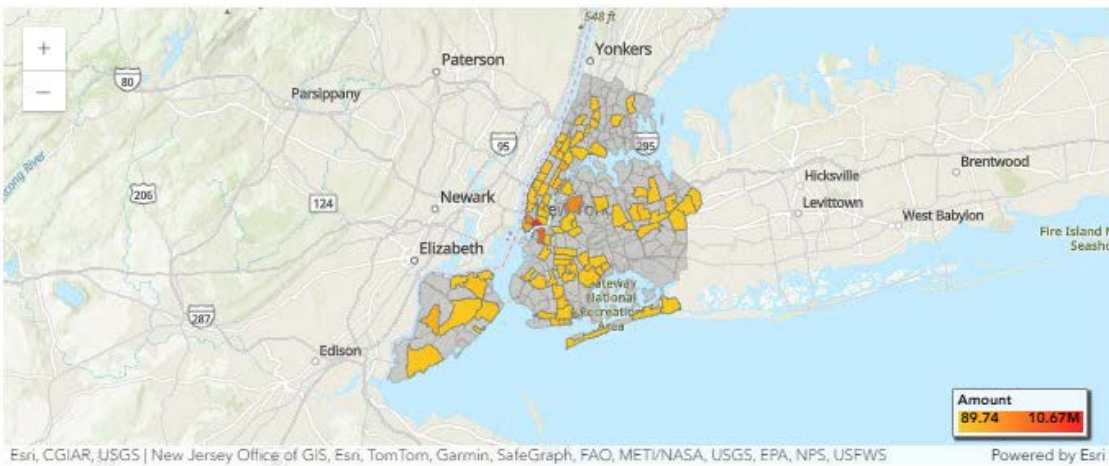
#### FEMA Public Assistance

- > Public Assistance Chart
- > Public Assistance Chart Map
- > Event Data

### PUBLIC ASSISTANCE CHART



### PUBLIC ASSISTANCE MAP



**Note: Total PA damages awarded for projects in multiple community districts, not represented in graphs/maps is \$849.50K**

## Consequence Details Page: FEMA NFIP

The FEMA NFIP page displays damage values attributed to flooding related issues on private properties. NFIP is applicable to residents in all events, not just disaster declarations. For FEMA NFIP a user can filter by Start and End Date, Occupancy Type, Basement Type, Damage Cause, Damage Type, Flood Level, Flood Zone, Elevated Building, and Location. The results set can be aggregated by Occupancy Type, Basement Type, Cause of Damage, or Flood Zone. The map will display total amount of damages aggregated by locations selected in the Location drop-down menu.

### FEMA Flood Assistance

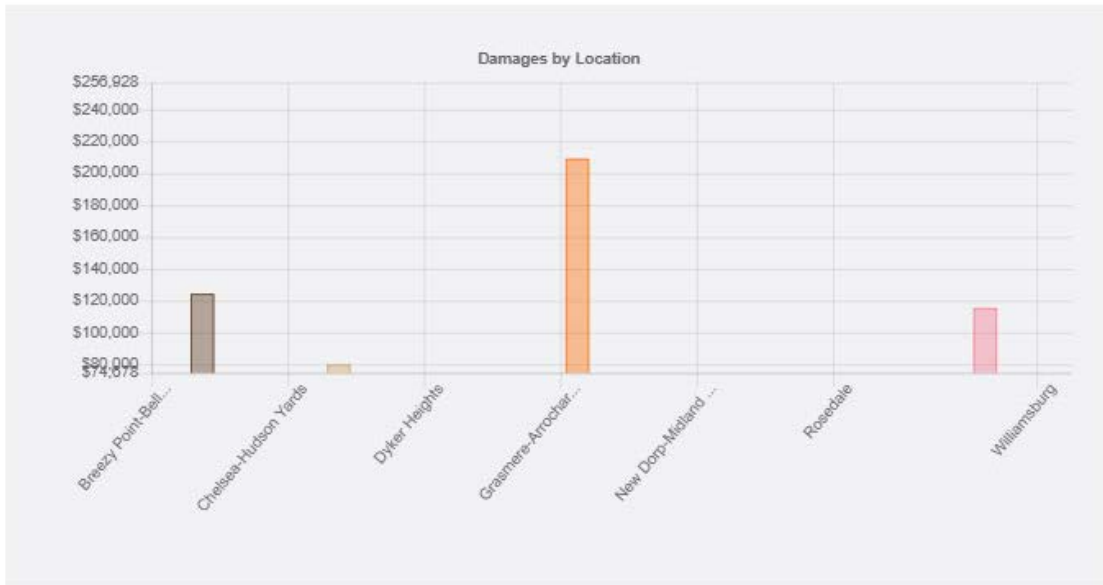
Start Date	08/21/2021 12:00 AM
End Date	08/24/2021 12:00 AM
Occupancy Type	All selected (7) <span>▼</span>
Basement Type	All selected (6) <span>▼</span>
Damage Cause	All selected (6) <span>▼</span>
Damage Amount	Payment <span>▼</span>
Base Flood	All selected (5) <span>▼</span>
Elevation Difference	All selected (10) <span>▼</span>
Flood Zone	All selected (4) <span>▼</span>
Is Elevated Building?	<input type="radio"/> Yes <input type="radio"/> No <input checked="" type="radio"/> Not Sure
Location	Neighborhood <span>▼</span>
	All selected (262) <span>▼</span>
Aggregate By	<input type="radio"/> Occupancy Type <input type="radio"/> Basement Type <input type="radio"/> Cause of Damage <input type="radio"/> Flood Zone <input checked="" type="radio"/> Location

On This Page

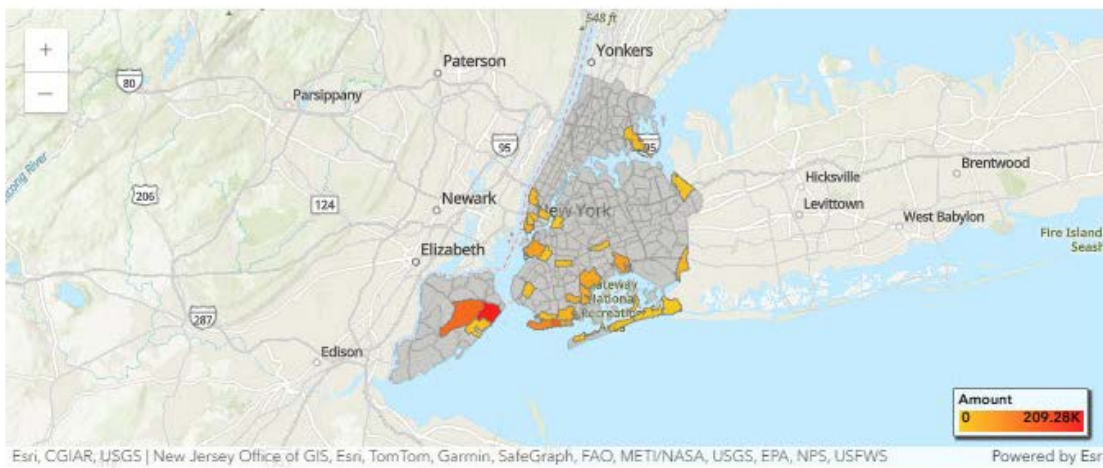
- FEMA Flood Assistance
  - > Flood Assistance Chart
  - > Flood Assistance Map
  - > Event Data

Apply

### FLOOD ASSISTANCE CHART



### FLOOD ASSISTANCE MAP



# Miscellaneous: Weather Alerts/Messaging

The Weather Alerts/Messaging page offers a view of the NWS Text Products and Notify NYC alerts immediately prior to, during, and immediately after the storm event. Each textual record can be fully displayed using the “View Message” link within the displayed tables.

< Search

**Hurricane Henri (SW2937)**

Summary

Details

**Consequences**

- > No Heat/No Hot Water
- > Inland Flood Complaints
- > MTA Ridership
- > Vehicle Collisions
- > School Attendance
- > Power Outages
- > Sanitation Metrics
- > Tree Emergency
- > Beach Advisories/Closures

**Federal Assistance**

- > FEMA Flood Assistance (NFIP)
- > FEMA Individual Assistance
- > FEMA Public Assistance

**Miscellaneous**

- > [Weather Alerts/Messages](#)

## Weather Alerts/Messages

Start Date

08/21/2021 12:00 AM

🗄

End Date

08/24/2021 12:00 AM

🗄

Alerts/Messages Type

None selected

⌵

apply

NWS ALERTS/MESSAGES - CHRONOLOGY OF EVENT

**PRE-EVENT**

Code	Date/Time	View Message
Flood Statement	8/19/2021 9:35:00 AM	<a href="#">View Message</a>
Flood Statement	8/19/2021 7:26:00 AM	<a href="#">View Message</a>
Flood Statement	8/19/2021 5:30:00 AM	<a href="#">View Message</a>
Flood Statement	8/19/2021 3:30:00 AM	<a href="#">View Message</a>
Marine Weather Message	8/19/2021 3:00:00 PM	<a href="#">View Message</a>
Marine Weather Statement	8/19/2021 4:14:00 AM	<a href="#">View Message</a>
Marine Weather Statement	8/14/2021 9:59:00 PM	<a href="#">View Message</a>
Marine Weather Statement	8/14/2021 8:51:00 PM	<a href="#">View Message</a>
Marine Weather Statement	8/14/2021 4:37:00 PM	<a href="#">View Message</a>
Marine Weather Statement	8/14/2021 5:03:00 AM	<a href="#">View Message</a>

« < 1 2 3 4 5 > »

**On This Page**

Weather Alerts/Messages

- > Pre-Event
- > During-Event
- > Post-Event
- > Event Data

**DURING-EVENT**

Code	Date/Time	View Message
Coastal Flood Watch	8/23/2021 3:20:00 PM	<a href="#">View Message</a>
Coastal Flood Watch	8/23/2021 4:28:00 AM	<a href="#">View Message</a>
Coastal Flood Watch	8/22/2021 5:37:00 PM	<a href="#">View Message</a>
Coastal Flood Watch	8/22/2021 4:32:00 PM	<a href="#">View Message</a>
Coastal Flood Watch	8/21/2021 4:51:00 PM	<a href="#">View Message</a>
Coastal Flood Watch	8/21/2021 12:47:00 PM	<a href="#">View Message</a>
Coastal Flood Watch	8/21/2021 4:39:00 AM	<a href="#">View Message</a>
Flash Flood Statement	8/22/2021 11:12:00 PM	<a href="#">View Message</a>
Flash Flood Statement	8/22/2021 5:45:00 PM	<a href="#">View Message</a>
Flash Flood Statement	8/22/2021 5:43:00 PM	<a href="#">View Message</a>

« < 1 2 3 4 5 ... 21 > »

**POST-EVENT**

Code	Date/Time	View Message
Air Quality Alert	8/27/2021 3:26:00 PM	<a href="#">View Message</a>
Air Quality Alert	8/26/2021 3:27:00 PM	<a href="#">View Message</a>
Air Quality Alert	8/25/2021 2:34:00 PM	<a href="#">View Message</a>
Air Quality Alert	8/25/2021 1:41:00 PM	<a href="#">View Message</a>
Air Quality Alert	8/25/2021 10:08:00 AM	<a href="#">View Message</a>
Flash Flood Statement	8/27/2021 5:08:00 PM	<a href="#">View Message</a>
Flash Flood Statement	8/28/2021 6:29:00 AM	<a href="#">View Message</a>
Flash Flood Statement	8/27/2021 6:01:00 PM	<a href="#">View Message</a>
Flash Flood Statement	8/27/2021 6:15:00 PM	<a href="#">View Message</a>
Flash Flood Statement	8/27/2021 6:17:00 PM	<a href="#">View Message</a>

« < 1 2 3 4 5 ... 11 > »

## Event Exports

All Event Summary, Event Details, and Consequence pages can be exported using the Export button, allowing users to easily download and share information. In addition, full event datasets can be downloaded as a ZIP file, which contains all data associated with the selected event for more comprehensive analysis and recordkeeping.

